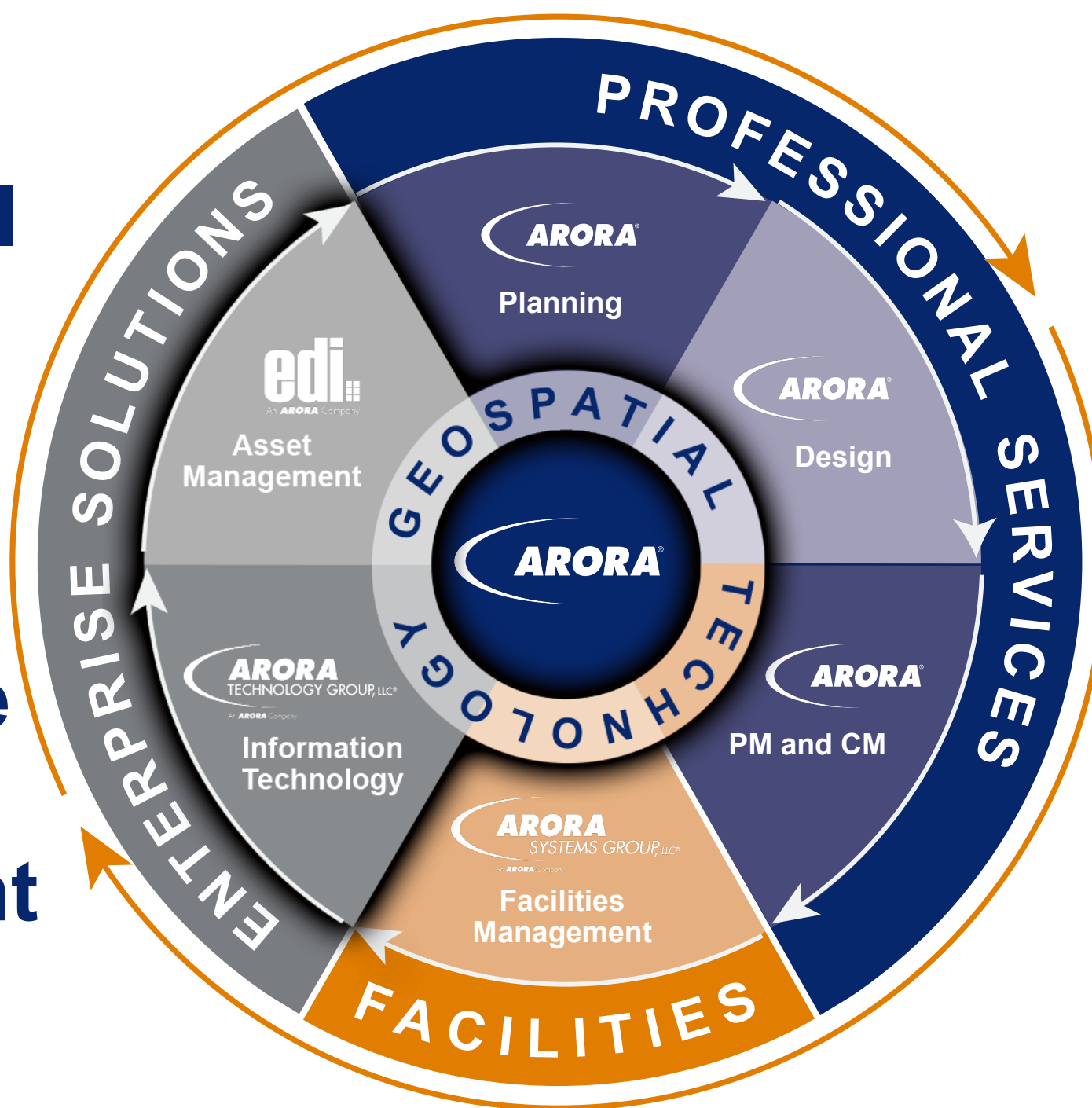




# Bridging the Data Gap

# Arora & EDI Complete EAM / Facilities and CIP Project Life Cycle Management



**edi**  
An **ARORA** Company

**ARORA**  
TECHNOLOGY GROUP, LLC®  
An **ARORA** Company

**ARORA**

Rethinking Infrastructure®



# 95.5%

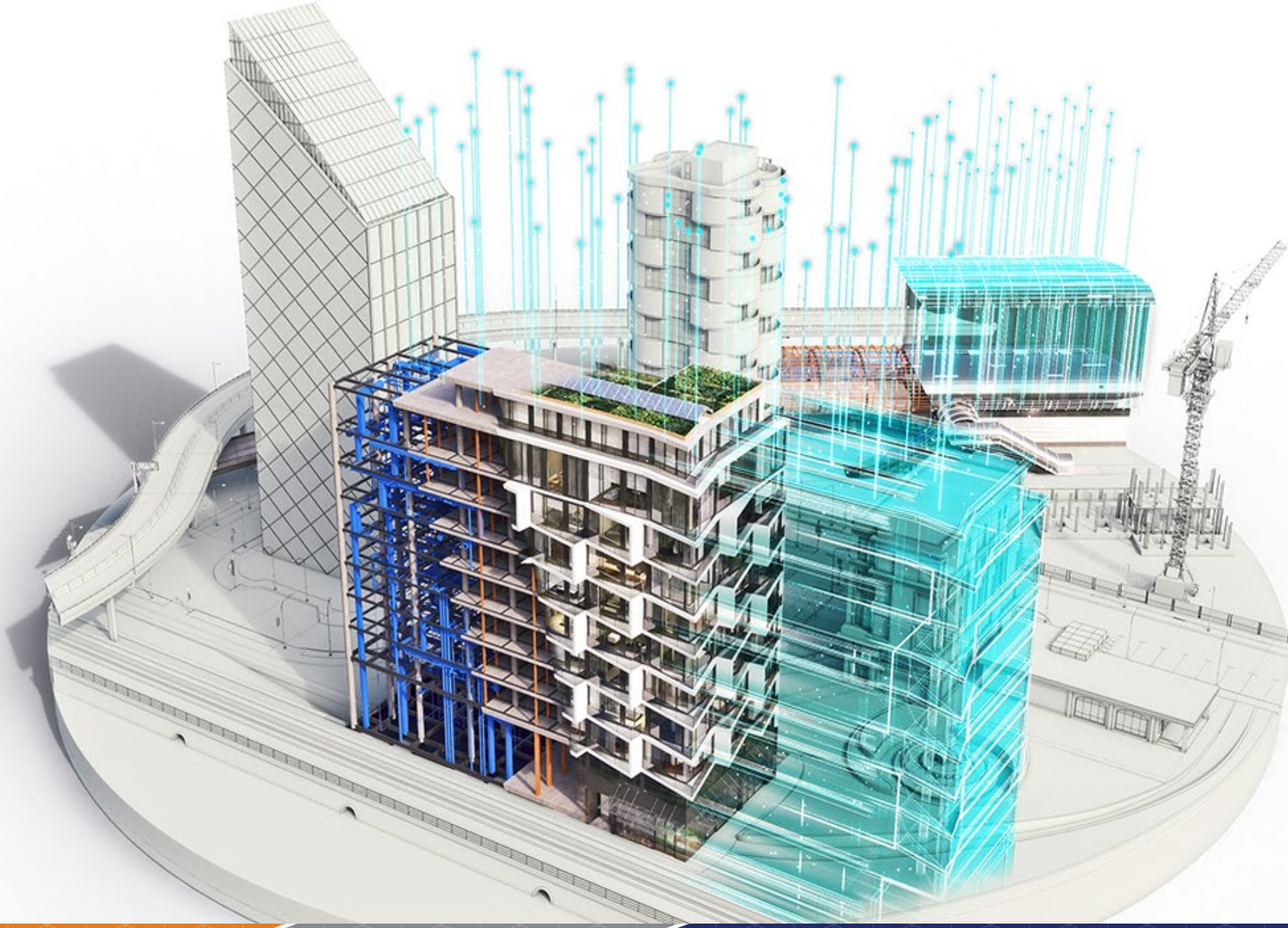
of all data goes unused in  
engineering and construction<sup>1</sup>

# \$7.77

Spent on operations and  
maintenance over the life of a  
facility for every one dollar of  
construction costs<sup>2</sup>

<sup>1</sup> Source: *Big Data = Big Questions for the  
Engineering and Construction Industry*,  
FMI Report

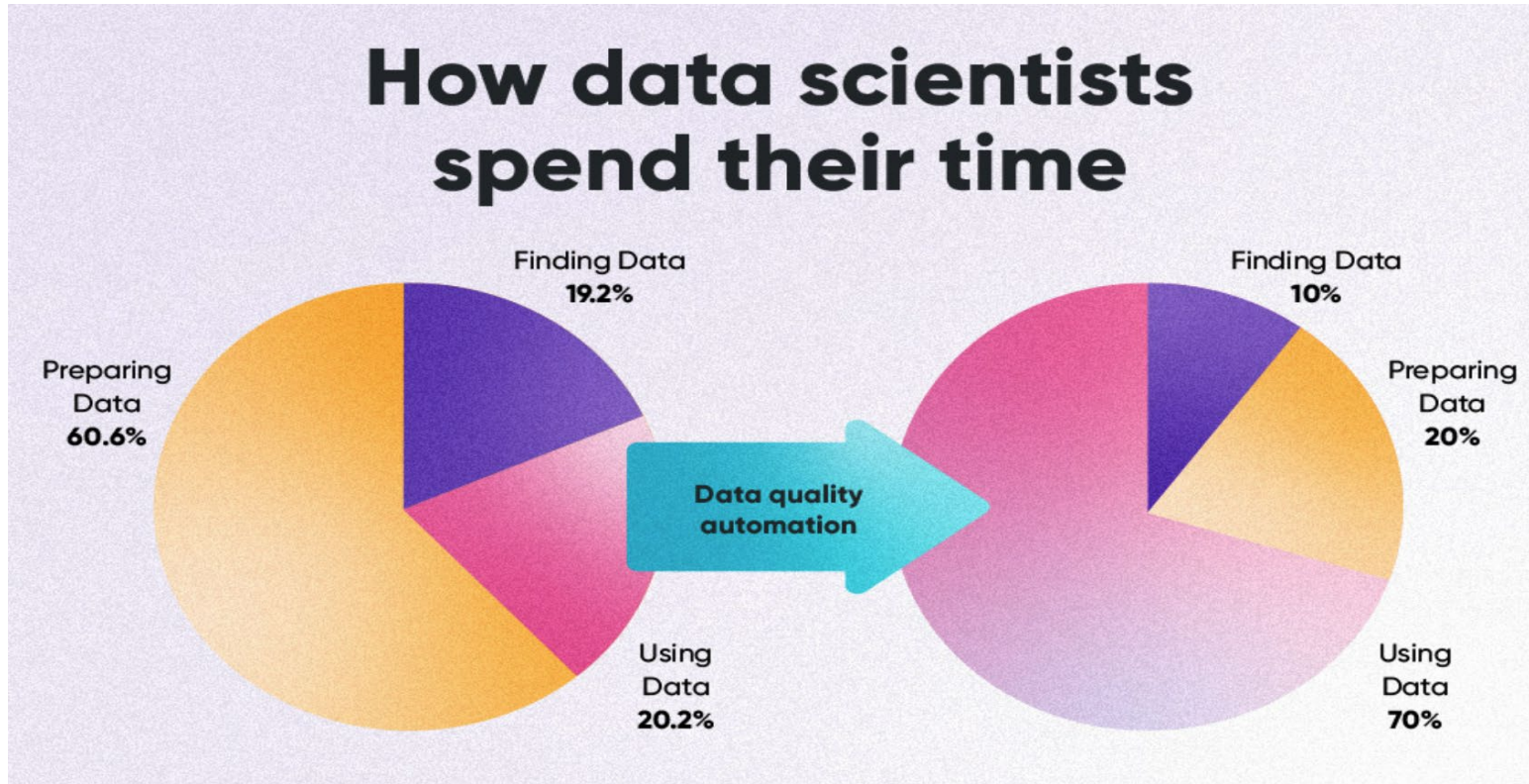
<sup>2</sup> Source: *Ratio of Operating and  
Maintenance Costs to Initial Costs of  
Building Services Systems*, *Cost  
Engineering* Vol 49/No.12



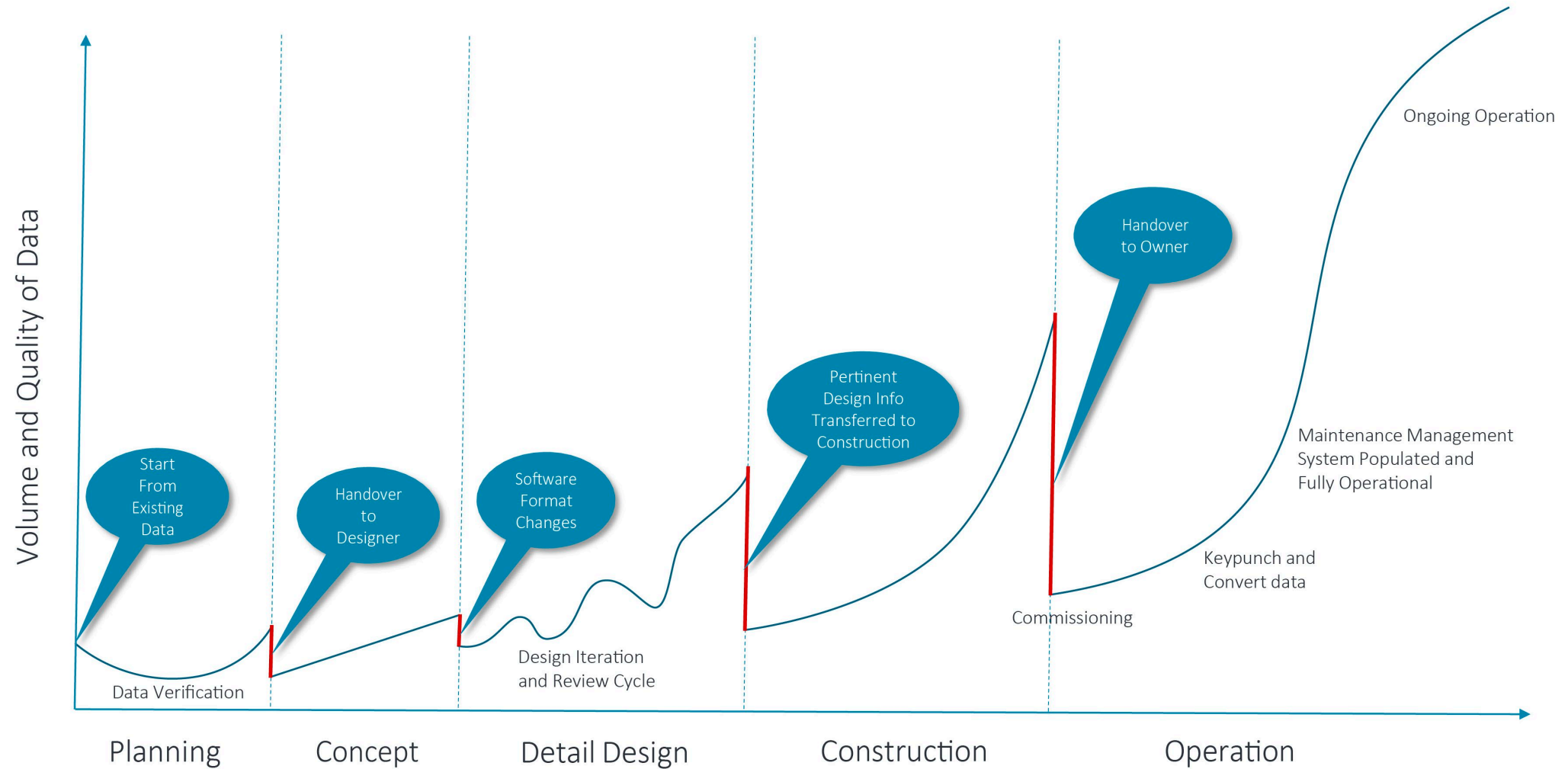


# Data Quality or Lack There Of!!!!

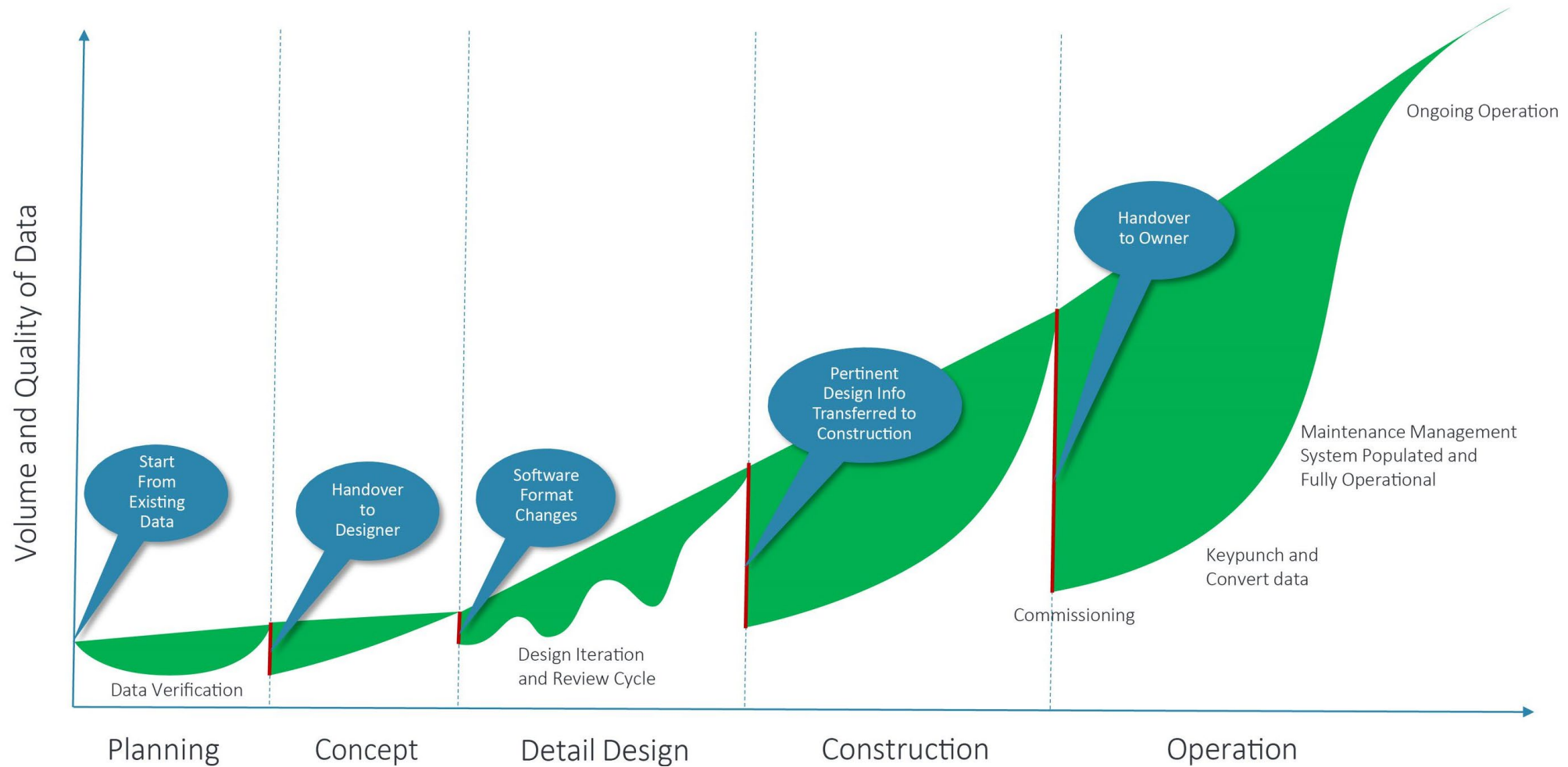
Specialists estimate that businesses with low data quality can lose around \$3.1 trillion in the U.S. alone – or 20% of their revenue.



# Data in the Typical Project Lifecycle



# Data Opportunities in the Typical Project Lifecycle





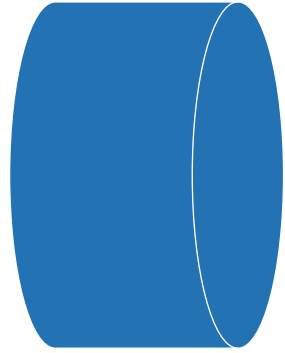
# Deliver *Better*, More *Robust* Digital Asset Data from the *Start!*



**The Data Interoperability  
journey begins by  
introducing a Standardized  
Enterprise Asset  
Data Registry**



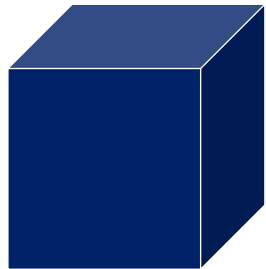




**Doesn't  
Fit The Registry**



**It Must Be  
Standardized  
On Entry**





**The Data  
Becomes a  
Perfect Fit!**



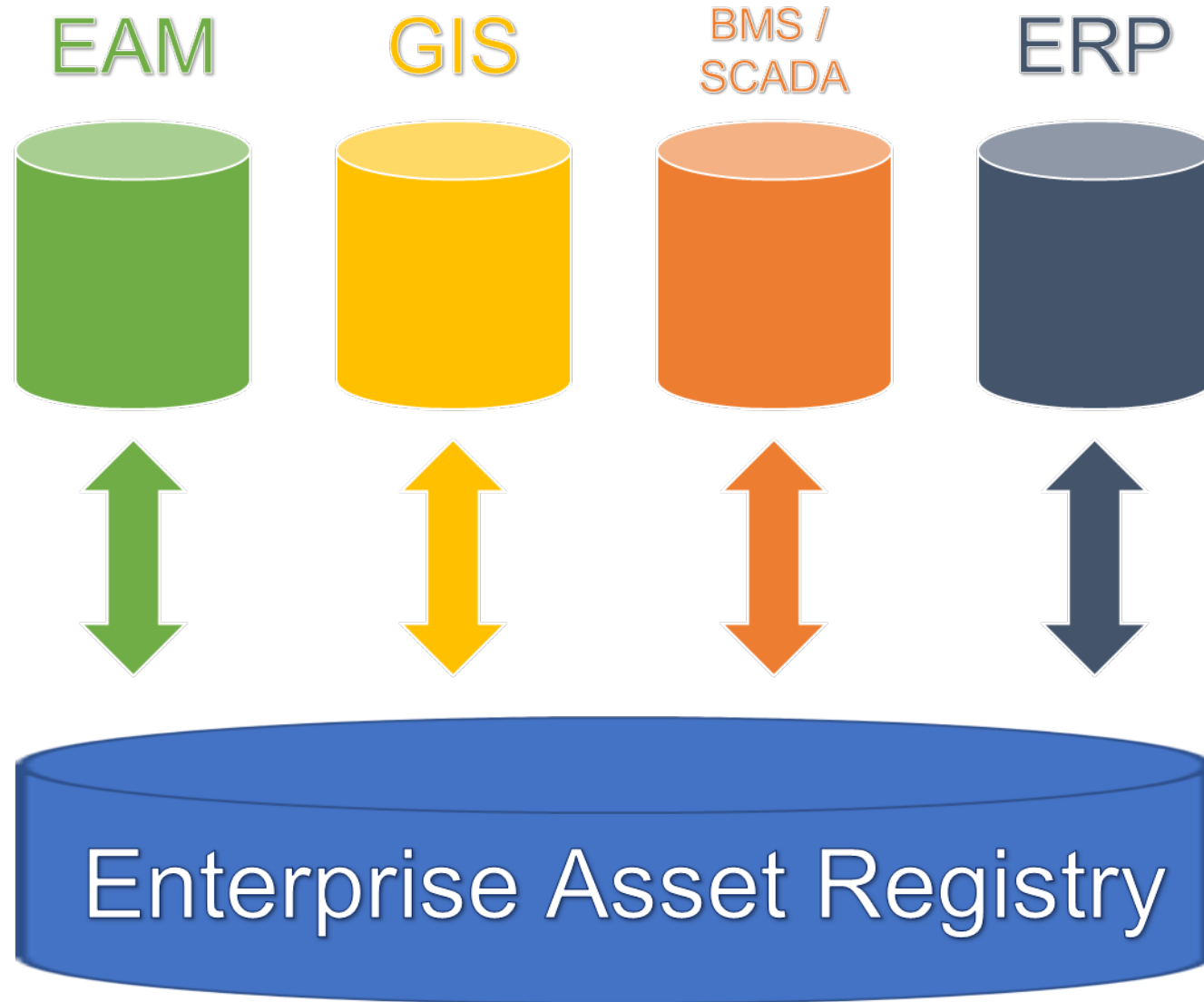
**Owners receive this...**



**...When they need this!**







# Digital Twin Are You Kidding!!!!



*Building a Digital Twin is out of reach for many organizations*

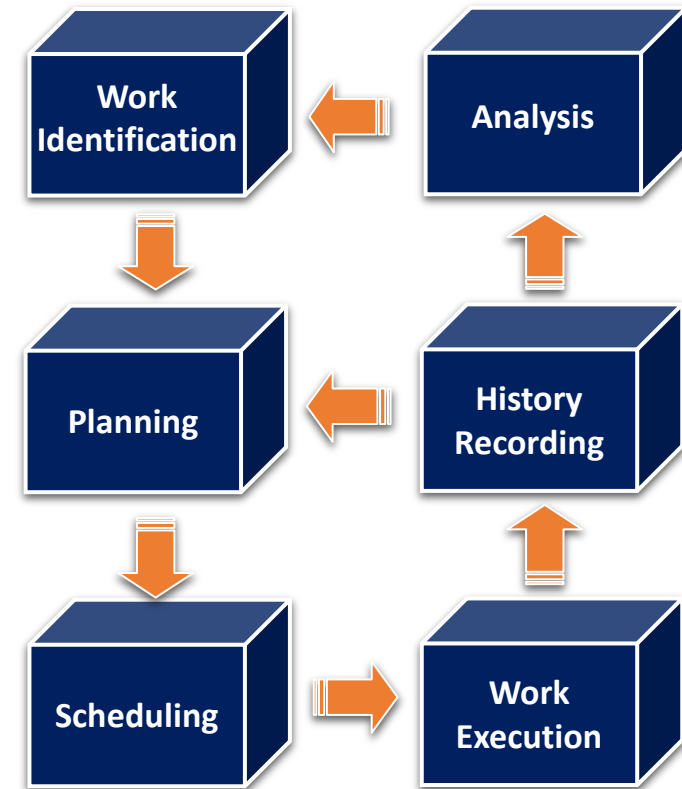


# What's Missing

- **Standards for Data Management and Collection:**
  - Maximo Enterprise Asset Management System
  - GIS
  - BIM
  - IoT
- **Resources to Manage/Maintain Data**
  - Data is an Asset!!!!

# Data is Important!

- Optimizing operations and maintenance programs for reliability and cost efficiency is an exercise in data analysis.
- The entire game is to use the information you have at your disposal to determine what work to do and when.





# The Norm...



WHO



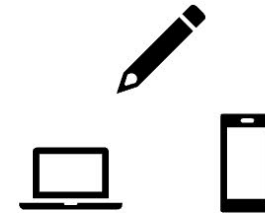
Technicians, Supervisors, and  
Administrative Employees

WHAT



Entering/Updating:  
Assets, Work Orders,  
Inspections, Job Plans

HOW



Transcribing Handwritten  
Notes into a Computer or  
Filling Out Forms on Mobile  
Devices



# ISSUE

Requires Impetus

Often Requires Manual Re-Entry

Opportunity for Human Error



# IMPACT

Lack of Data



Expensive Data



Inconsistent Data





# The Easy Way...





Contact me for more  
information:

Joseph Mahaz  
[jmahaz@edatai.com](mailto:jmahaz@edatai.com)  
(727) 510-3994  
[www.edatai.com](http://www.edatai.com)

