



2024 © ActiveG
Southside Water Reclamation Plant

Spatial Suite for Maximo



Release Ready
Specialty

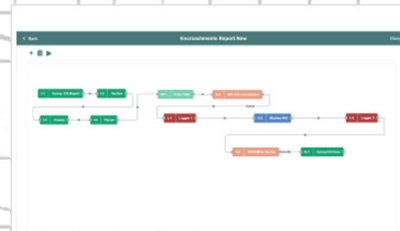
MapEngine

The first and best
spatial integration
and visualization
app for Maximo.



Nash Workflows

Deploy EAM/GIS
workflows
rapidly,
leveraging the
software you
already have.



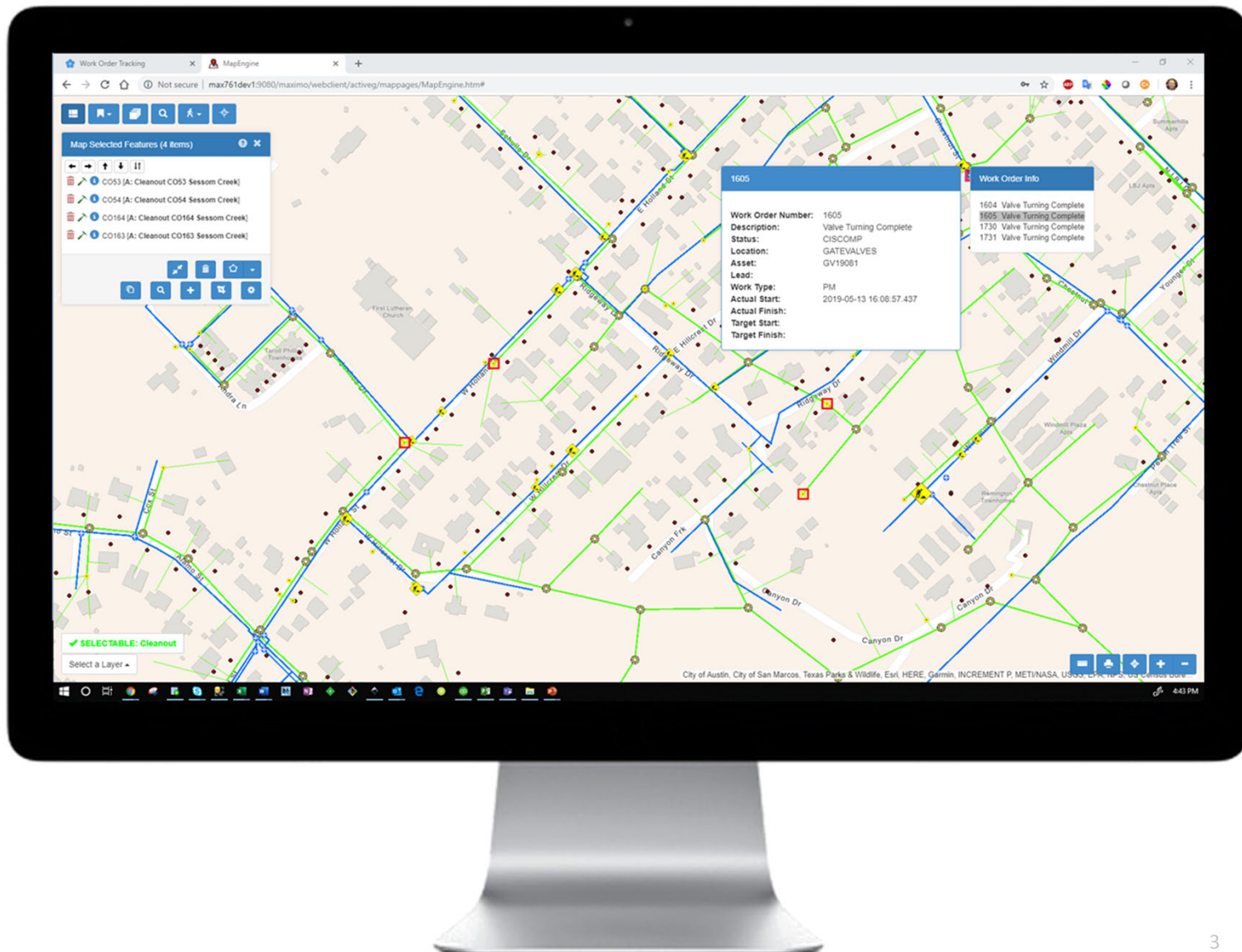
Opqo by Sharptree
Game-changing
mobile solution for
Maximo. Compatible
with MapEngine.



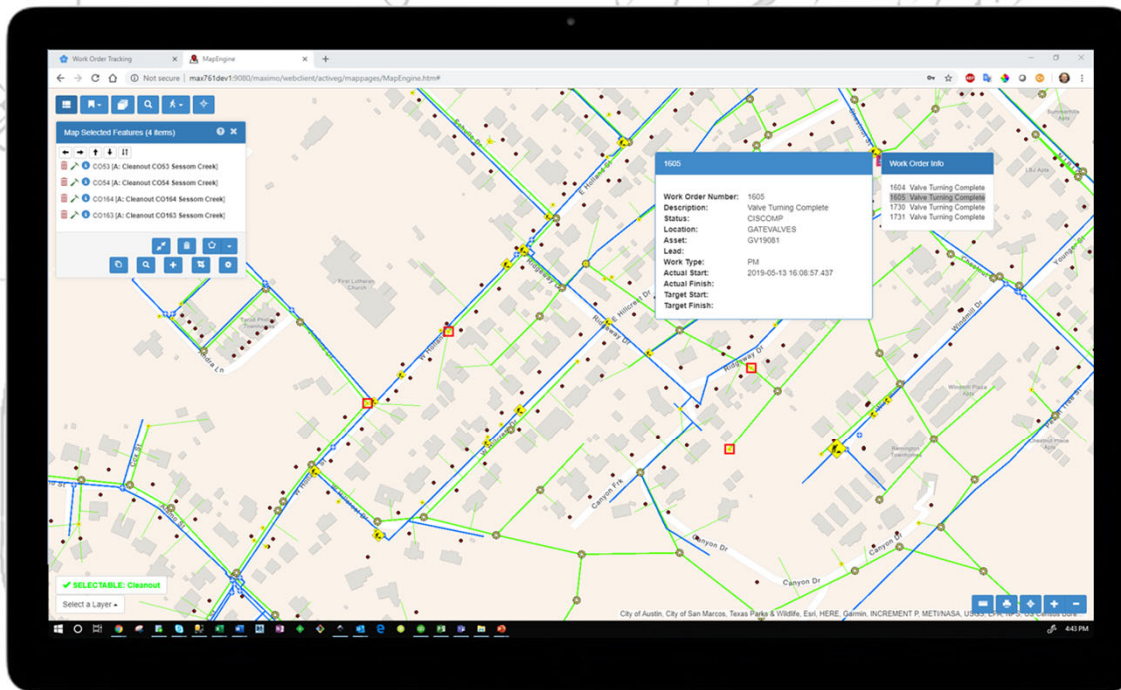
Advanced GIS Integration Services

No one has more experience at delivering spatial
program solutions for Maximo and ArcGIS.



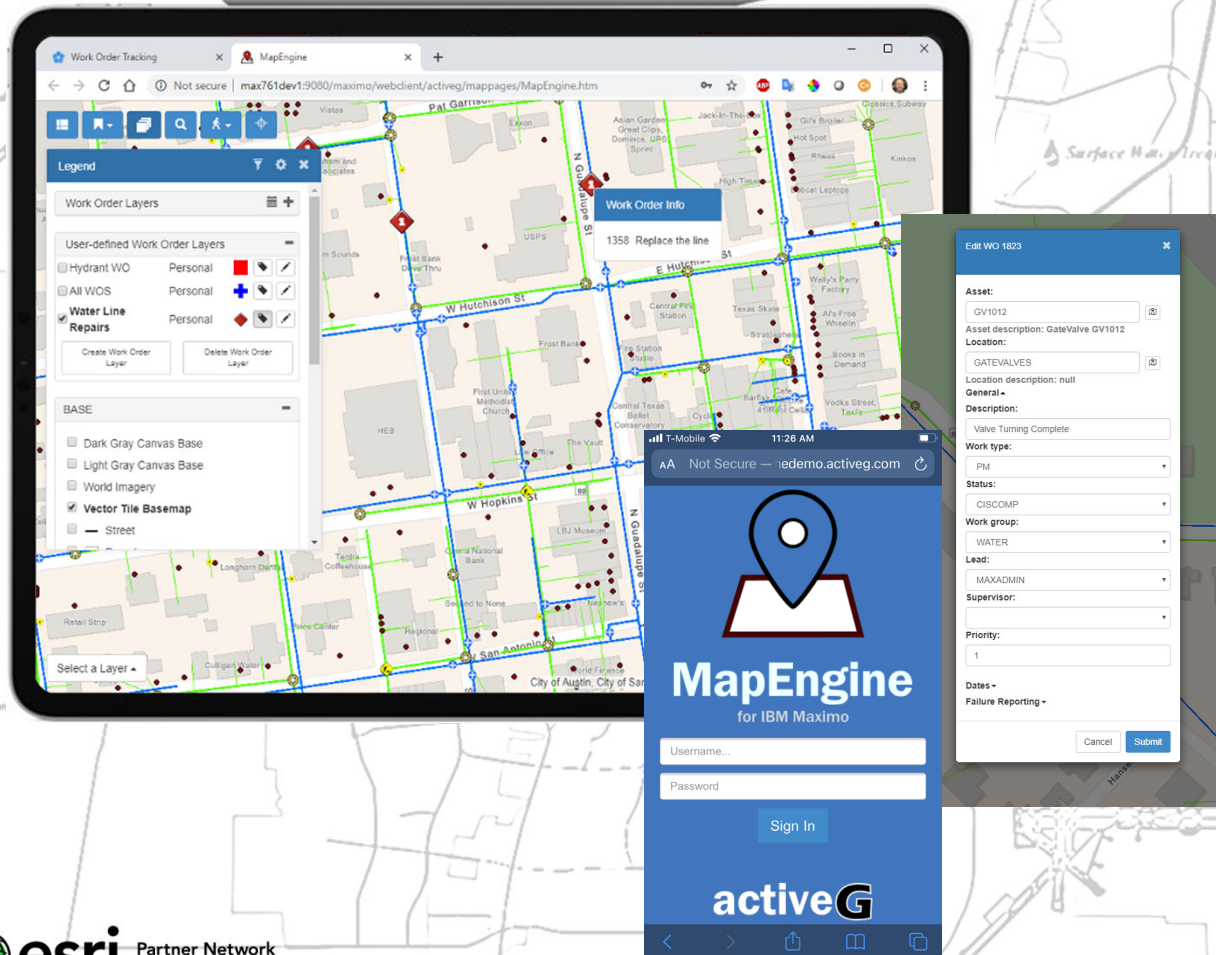


ActiveG MapEngine™

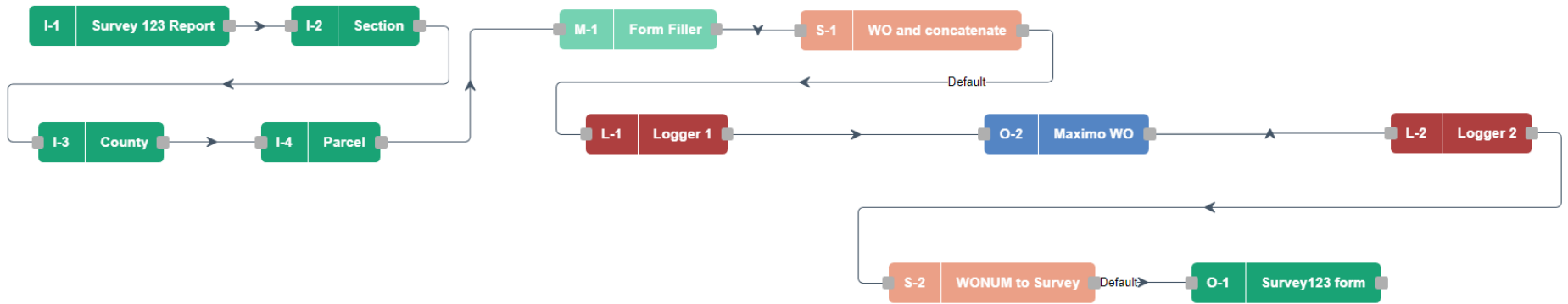


- A framework for spatial solutions in Maximo
- Geospatial visualization of your Maximo data
- Spatial input/output for Maximo.
- Run it with or without Maximo Spatial.
- 20+ years in the making

MapEngine Key Features/Benefits



- **Personalization and Flexibility**
 - View your data your way
 - Responsive, mobile-friendly
 - Bigger map, dual screen-capable
- **Deep Searching**
 - Define searches that fit business processes
 - Summary/report mode
 - Leverage Maximo saved queries
- **Mass changes based on geolocation**
 - Create work orders for selected assets, based on templates
 - Update field values on map-selected work orders.
- **Linear Ready**
- **Optimized Routing**

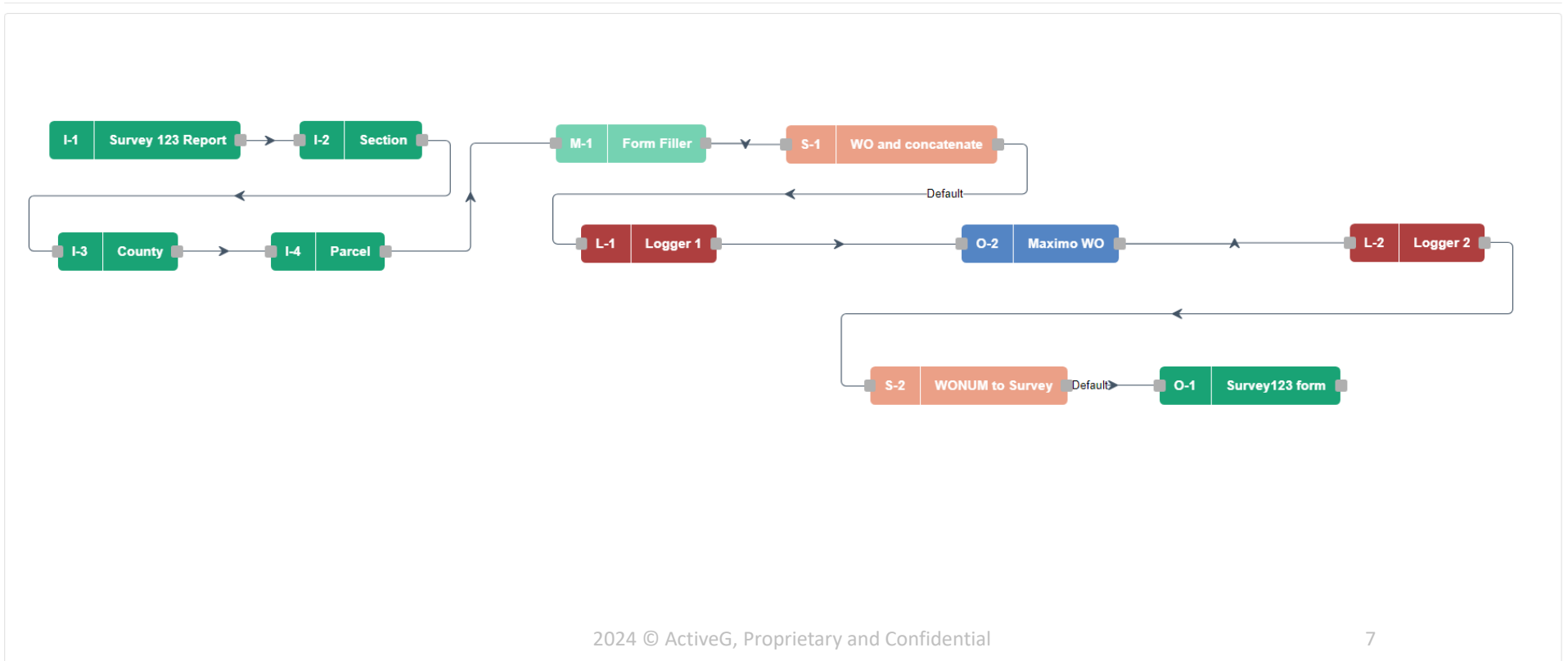


Z ua†vl% j ‡v"n8 C aflu Z £fi| s}£ » fl°

< Back

Encroachments Report New

Danny ▾



Z uatvl% jtv"n8 C aflu Z £fi| s}£ » fl°

- Powerful, no-code process automation web application for **ArcGIS**.
- REST API integration with **IBM Maximo**, **ServiceNow**, and more.
- Native geo inputs to enrich your asset data.
- Enables Esri field apps with robust business logic.

