

IBM TechXchange Community

Connect via forums, blogs, files and face-to-face networking.

IBM Asset & Facilities Management

Your destination for peer and expert insights to help unlock the power of data with AI and Asset & Facilities Management to advance your digital reinvention.

Join and participate in the Maximo Community [HERE](#)



Scan to Join the Product Updates Group

Maximo Groups

IBM Maximo Product Updates

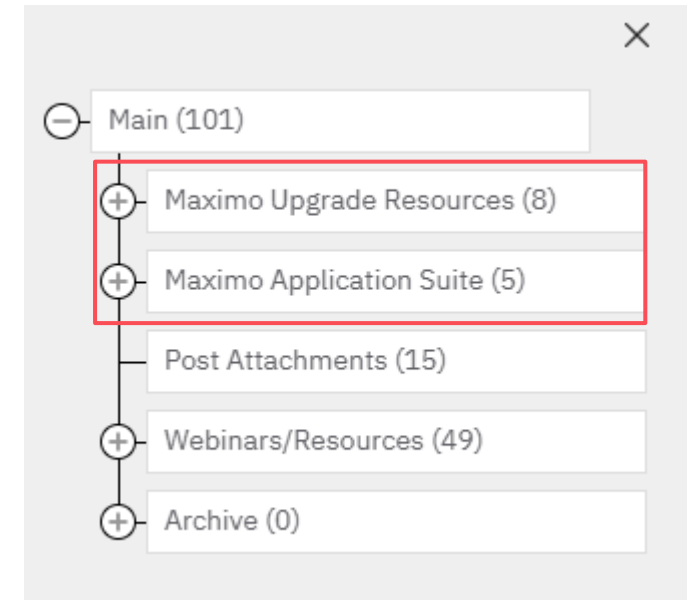
Request to Join

Discussions 0 | Libraries 0 | Members 21

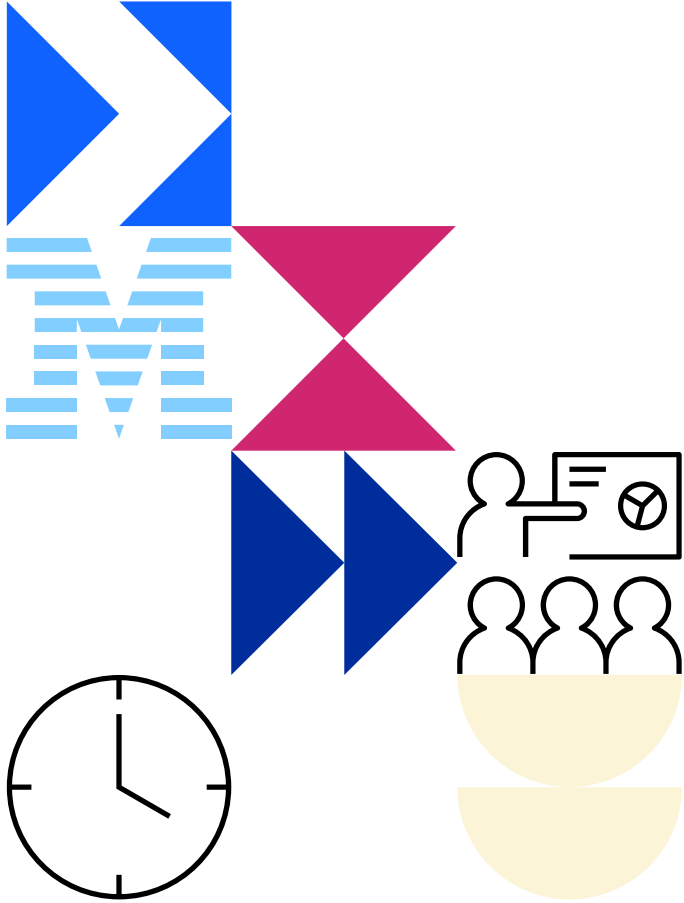
Maximo

Join

Discussions 8.9K | Libraries 727 | Members 9.3K



Your experience drives the future



- **Influence product roadmap**
Collaborate and innovate with Product and Design teams to shape future work.
- **Get exclusive previews before others**
Preview and give early feedback on new product experiences.
- **Share your experiences**
Share your goals, challenges, and feedback so we can build products that help you and your organization succeed.

Become a part of IBM's [User Engagement Program](#).



Scan the code to join!

Request for Enhancements in AHA!



AI Applications - Ideas Portal

Welcome to the idea portal for IBM AI Applications Customers

IBM Employees:

The correct URL for entering your ideas is: <https://ibm-ai-apps-internal.ideas.aha.io/>

Clients:

Shape the future of IBM!

We invite you to shape the future of IBM, including product roadmaps, by submitting ideas that matter to you the most. Here's how it works:

Post your ideas

Start by posting ideas and requests to enhance a product or service. Take a look at ideas others have posted and upvote them if they matter to you,

1. Post an idea
2. Upvote ideas that matter most to you
3. Get feedback from the IBM team to refine your idea

Help IBM prioritize your ideas and requests

The IBM team may need your help to refine the ideas so they may ask for more information or feedback. The offering manager team will then decide if they can begin working on your idea. If they can start during the next development cycle, they will put the idea on the priority list. Each team at IBM works on a different schedule, where some ideas can be implemented right away, others may be placed on a different schedule.

Receive notification on the decision

Some ideas can be implemented at IBM, while others may not fit within the development plans for the product. In either case, the team will let you know as soon as possible. In some cases, we may be able to find alternatives for ideas which cannot be implemented in a reasonable time.

<https://ibm-ai-apps.ideas.ibm.com/>