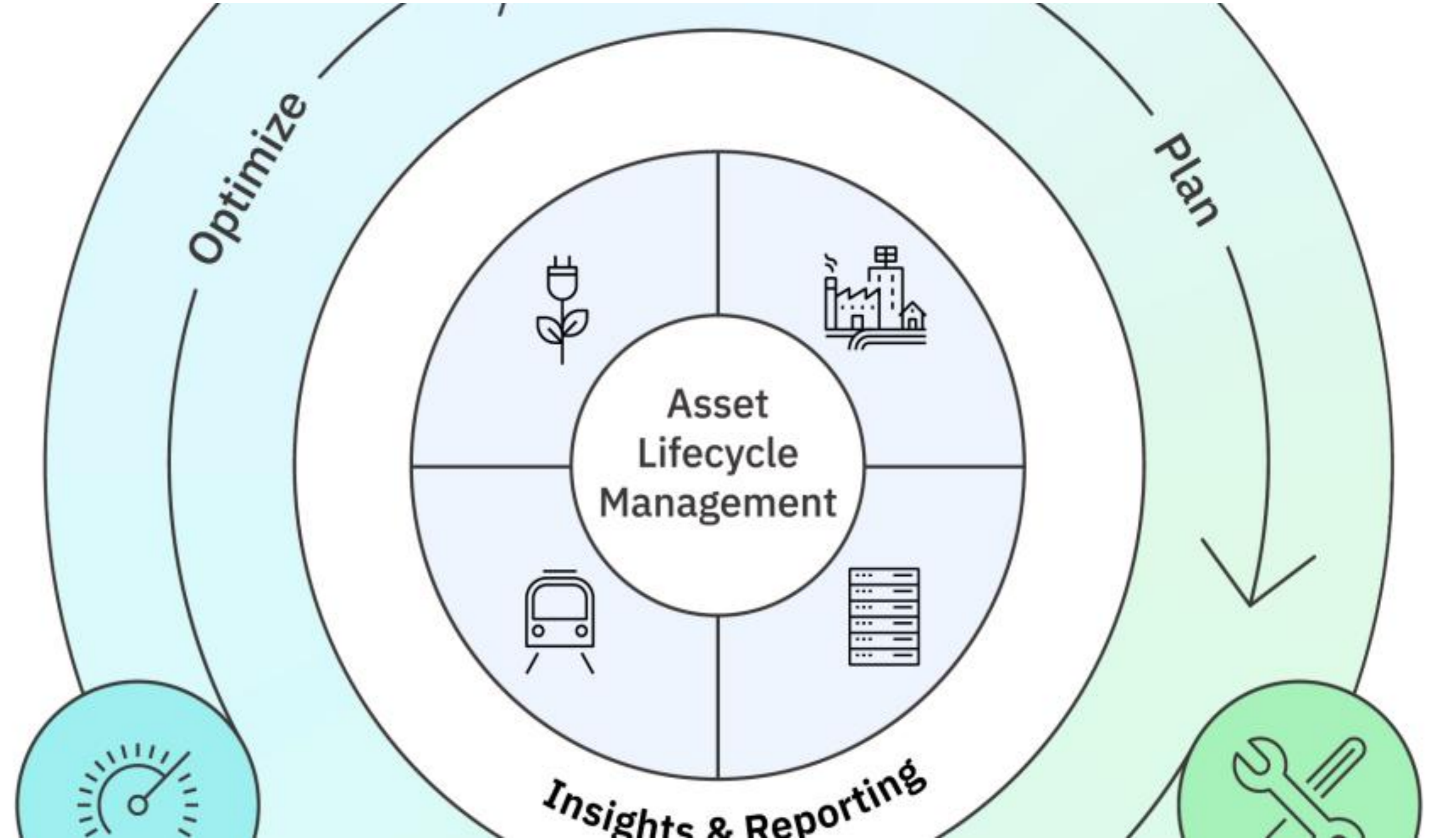


Understanding IBM Maximo Application Suite AppPoint usage



With
Dave Gasdia
Product Management
drgasdia@us.ibm.com

Arif Ali
Senior Technical Specialist,
IBM Business Partner Ecosystem
aali@us.ibm.com

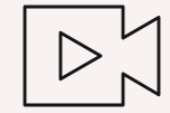
Miryam Kofman
Senior Technical Specialist,
IBM Business Partner Ecosystem
mkofman@us.ibm.com

Anantharaman Subramanian
Senior Technical Specialist,
IBM Business Partner Ecosystem
ananth@us.ibm.com



Introduction

IBM Video Learning Subscription



The IBM Video Learning Subscription is an ideal and inexpensive way for anyone to learn about the latest IBM products and technology by watching recordings of IBM web seminars, online classes, and TechXchange conference seminars.

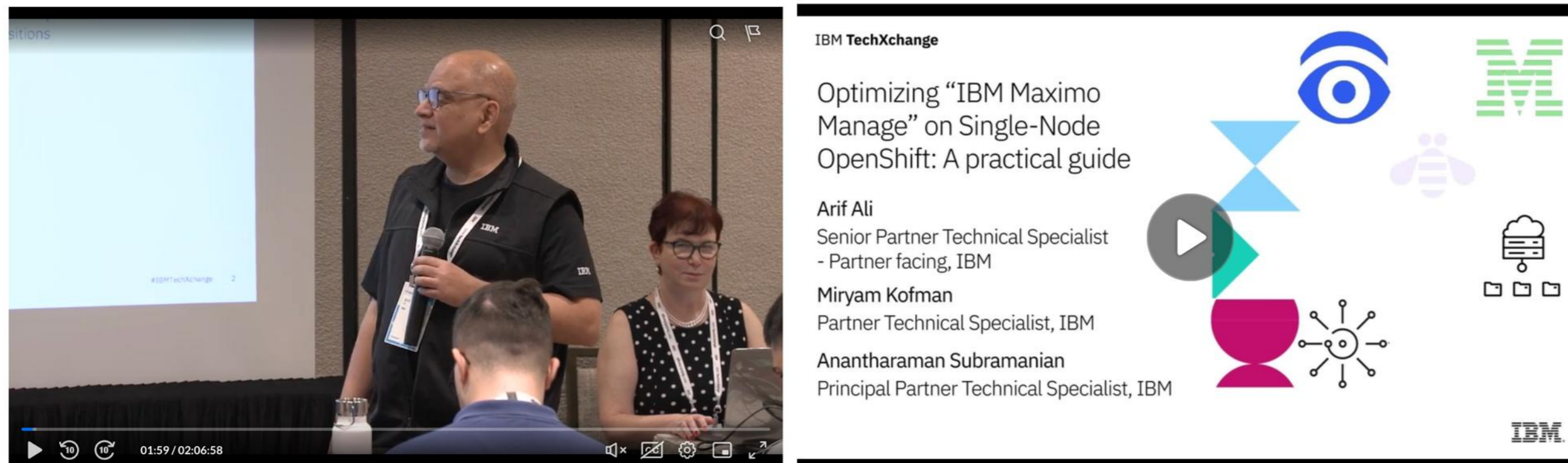
These are technical videos that cover a broad range of topics at all skill levels in the areas of Artificial Intelligence, Automation, Data Analytics and Business Automation, IBM Cloud, IT Infrastructure, Security, and Sustainability.

New videos are being added continuously throughout the year.

[Access Video Subscription](#) →

[Explore Video Subscription](#) →

<https://www.ibm.com/training/subscriptions>



MaximoGroups.org
Established to support/promote/serve all Maximo professionals/users.

[linkedin.com/in/arifsali](https://www.linkedin.com/in/arifsali)

[linkedin.com/in/miryam-kofman-1ab57/](https://www.linkedin.com/in/miryam-kofman-1ab57/)

[linkedin.com/in/anantharaman-subramanian-8063783/](https://www.linkedin.com/in/anantharaman-subramanian-8063783/)

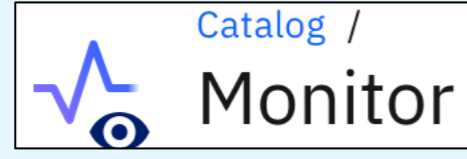
Maximo Application Suite – License key terms

MAS AppPoints	Application Points (AppPoints) are used to track and enforce user entitlement and access across Maximo Application Suite.
License Key Center (LKC)	An IBM website from where you download and manage your license file.
Suite License Server (SLS)	The Suite License Service (SLS) stores and manages the Maximo Application Suite license. You upload the license file (pool of AppPoints) to the SLS server as part of the initial setup.
MAS License File	The license file is provided with your purchase of Maximo Application Suite. The login information to download the file from LKC is provided with your welcome letter.
Software Entitlement Key	The software entitlement key is a password to obtain the software. The software is in the form of container images, which gets automatically pulled/downloaded by OpenShift using the entitlement key available via MyIBM Container Software Library .

The number of AppPoints required to deploy and activate the **application**



Pricing
0 Reserved AppPoints



Pricing
0 Reserved AppPoints



Pricing
0 Reserved AppPoints



Pricing
0 Reserved AppPoints



Pricing
45 Reserved AppPoints

Manage your asset lifecycle, workflow, and business processes and integrate with other enterprise applications.


Optimize operating performance by using AI-powered remote asset monitoring to obtain insights into failures.

Predict and manage the likelihood of future failures by applying machine learning and data analytics.

Use artificial intelligence and augmented reality to enable technicians to troubleshoot and repair equipment problems more efficiently.

By combining Maximo Visual Inspection software with off-the-shelf mobile and edge devices, you can rapidly add intelligent “eyes” to your operations.

The number of AppPoints required to deploy and activate the Industry solution



Pricing

0 Reserved AppPoints

IT	0	Asset Configuration Manager	0	Aviation	0
Utilities	0	Health, Safety and Environment	0	Nuclear	0
Oil & Gas	0	TRIRIGA Connector	0	Envizi Connector	0
Service Provider	0	Transportation	0	Spatial for ESRI	0
Reliability Strategies	0	Spatial	20	Civil Infrastructure	50
Workday Connector	80	Oracle Connector	80	SAP Connector	80
Optimizer	220				

Pricing

Reserved AppPoints

Entitlements: Defining User Access for Application & Administration Control

Access Type

Concurrent

Points are checked out when the user logs in. Points are returned when the user session ends.

Authorized

Points are permanently reserved so that the user can log in independent of the current balance. Administrator users have authorized access by default.

Access Type
 Concurrent ⓘ Authorized ⓘ

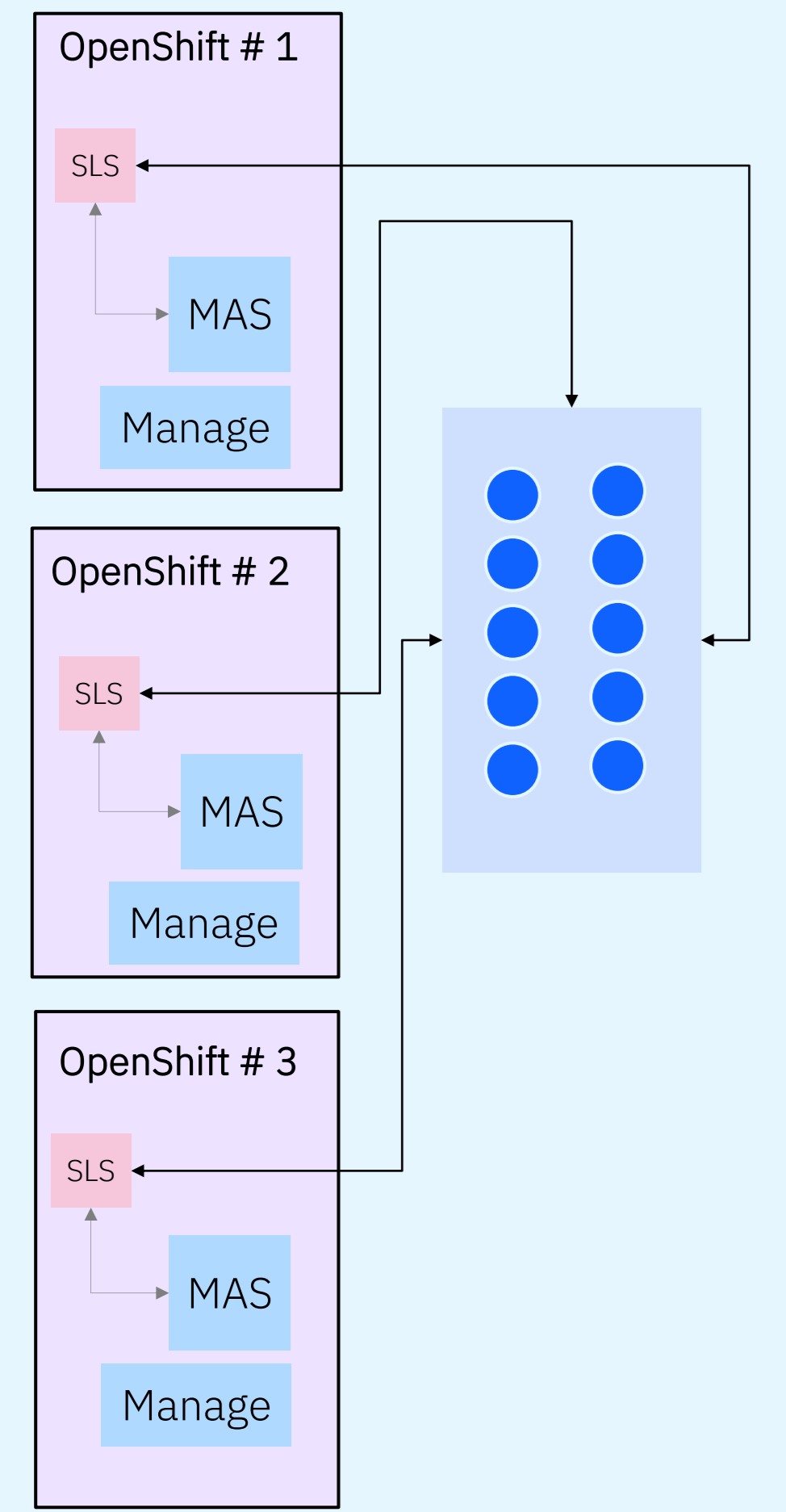
Access Type
 Concurrent ⓘ Authorized ⓘ

Self service	Limited	Base	Premium
Cost: 0 <input checked="" type="radio"/> AppPoints	Cost: 5 <input checked="" type="radio"/> AppPoints	Cost: 10 <input checked="" type="radio"/> AppPoints	Cost: 15 <input checked="" type="radio"/> AppPoints
● Manage ⓘ	● Manage ⓘ ● Monitor	● Manage ⓘ ● Monitor ● Assist ● Health	● Manage ⓘ ● Monitor ● Assist ● Health ● Predict ● Visual Inspection

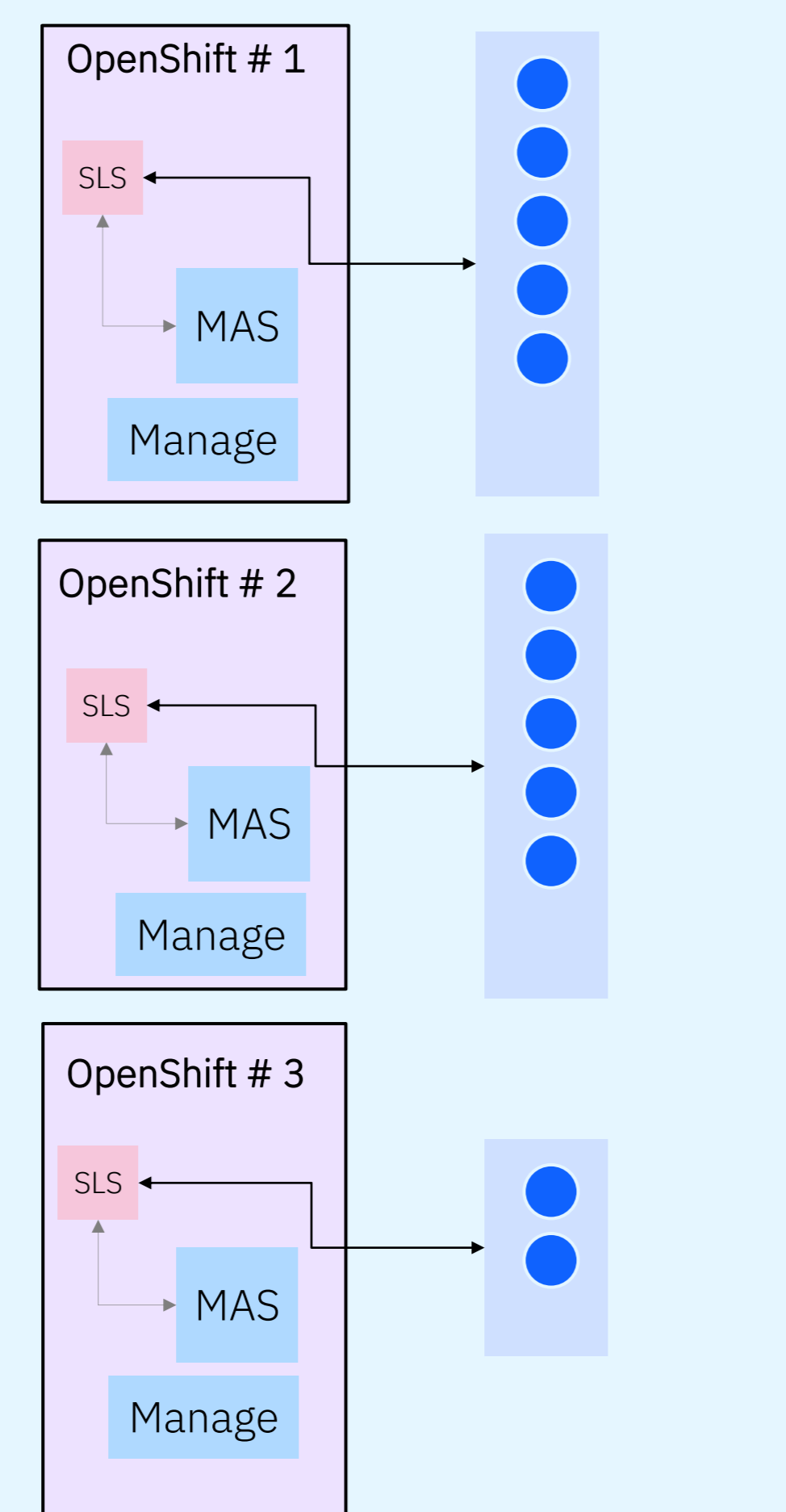
Self service	Limited	Base	Premium
Cost: 0 <input checked="" type="radio"/> AppPoints	Cost: 2 <input checked="" type="radio"/> Reserved AppPoints	Cost: 3 <input checked="" type="radio"/> Reserved AppPoints	Cost: 5 <input checked="" type="radio"/> Reserved AppPoints
● Manage ⓘ	● Manage ⓘ ● Monitor	● Manage ⓘ ● Monitor ● Assist ● Health	● Manage ⓘ ● Monitor ● Assist ● Health ● Predict ● Visual Inspection

Suite License Service (SLS) patterns

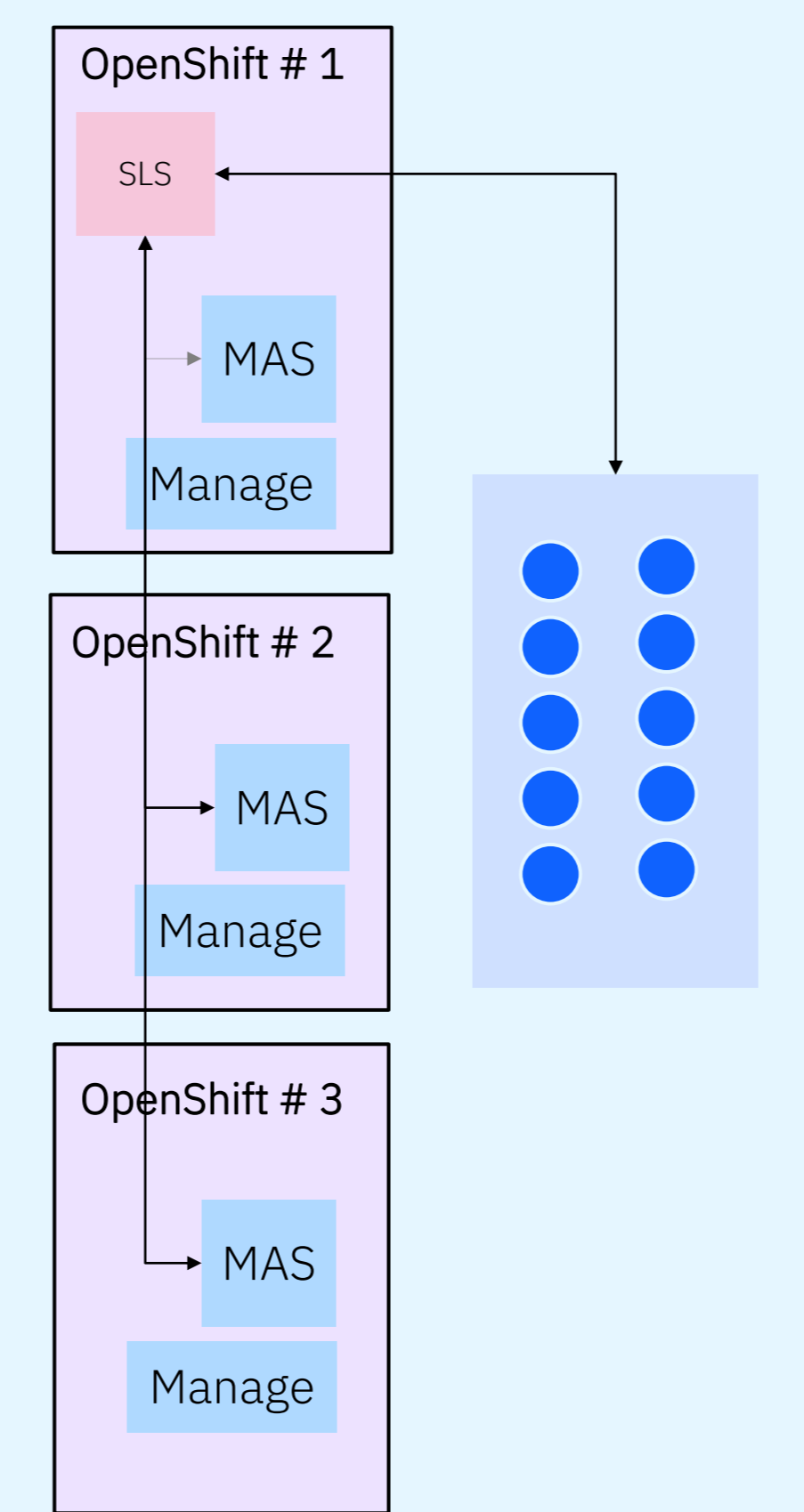
Multiple OCP, multiple MAS/Manage, **multiple SLS**, single license file. Dev/Test/Prod. Small/mid sized orgs with one team



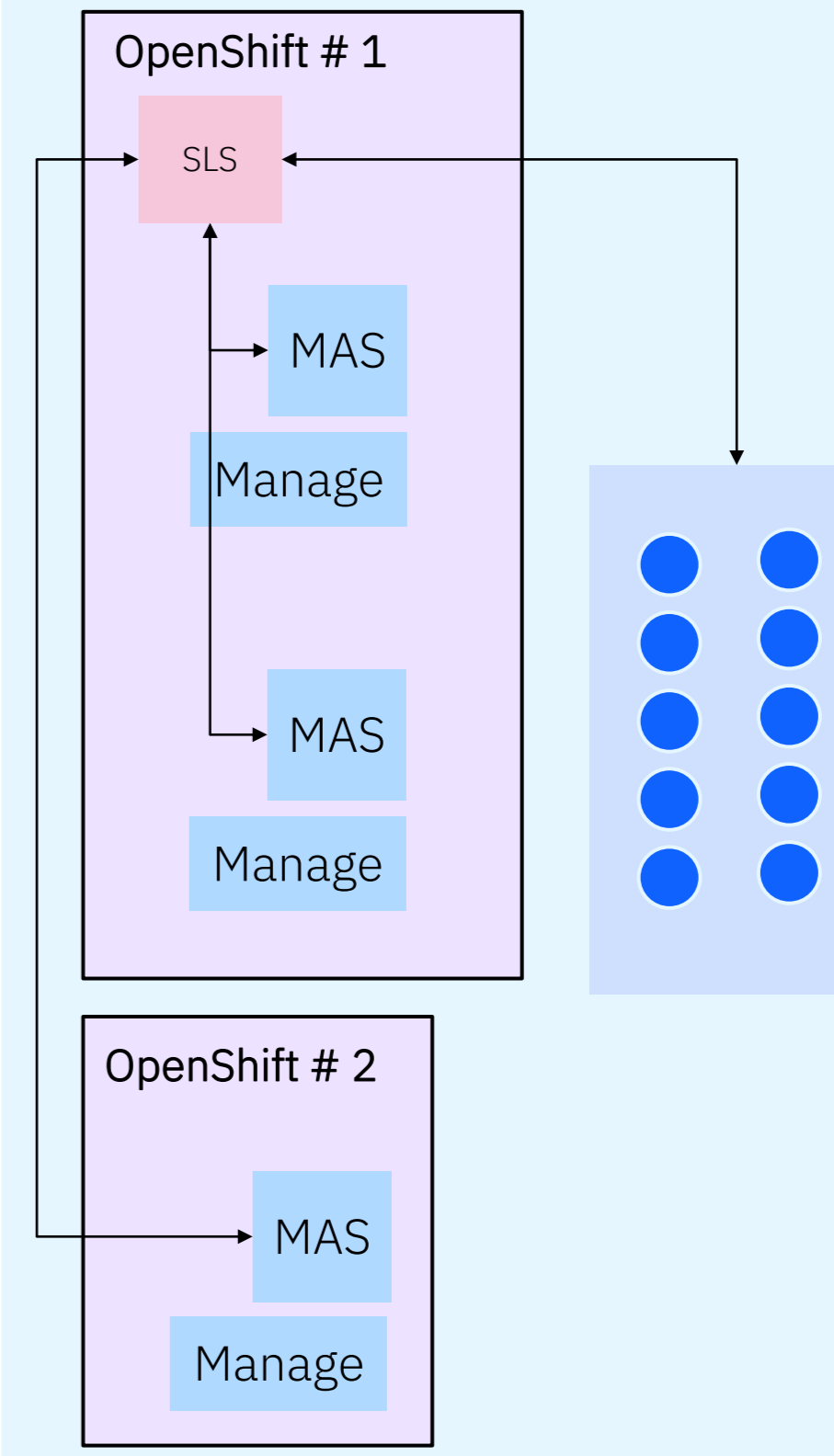
Multiple OCP, multiple MAS/Manage, multiple SLS, **multiple license file**. Dev/Test/Prod. Example: big orgs with multiple teams



Multiple OCP, multiple MAS/Manage, **single/shared SLS**, single license file. Dev/Test/Prod



Multiple OCP, multiple MAS/Manage, single SLS, single license file. **Test/Prod**



Partner Technical Specialist team



Arif Ali
Senior Partner Technical Specialist

—
aali@us.ibm.com
[LinkedIn](#)



Anantharaman Subramanian
Senior Partner Technical Specialist

—
ananth@us.ibm.com
[LinkedIn](#)



Miryam Kofman
Senior Partner Technical Specialist

—
mkofman@us.ibm.com
[LinkedIn](#)



Marsha Knudsen
Senior Partner Technical Specialist

—
mmknudsen@us.ibm.com
[LinkedIn](#)

Thank you

© 2024 International Business Machines Corporation. No part of this document may be reproduced or transmitted in any form without written permission from IBM.

U.S. Government Users Restricted Rights — use, duplication or disclosure restricted by GSA ADP Schedule Contract with IBM.

This document is current as of the initial date of publication and may be changed by IBM at any time. Not all offerings are available in every country in which IBM operates.

Information in these presentations (including information relating to products that have not yet been announced by IBM) has been reviewed for accuracy as of the date of initial publication and could include unintentional technical or typographical errors. IBM shall have no responsibility to update this information.

This document is distributed “as is” without any warranty, either express or implied. In no event, shall IBM be liable for any damage arising from the use of this information, including but not limited to, loss of data, business interruption, loss of profit or loss of opportunity. IBM products and services are warranted per the terms and conditions of the agreements under which they are provided. The performance data and client examples cited are presented for illustrative purposes only. Actual performance results may vary depending on specific configurations and operating conditions.

